



JMB-Jets

Mirage 2000

Airex/composite material manufacturing.

Wingspan : 125cm

Length : 195cm

Fuel tank capacity : 2270cc

Servos : All in HV

Engine : 6kg-10kg

Recommended battery capacity : 2s2200-2600

Recommended Engine K85G

Navigation light controller manual



CG



SETUP

Ailerons 13mm up down

Elevator 26 mm up and down

Ruder 25 mm right -left

New Multifunctional JP-Electric Retract controller V1 and V2

Instruction Manual



For JP Hobby Alloy Electric Retracts Landing Gear Packing

A- Multi-function landing gear controller features:

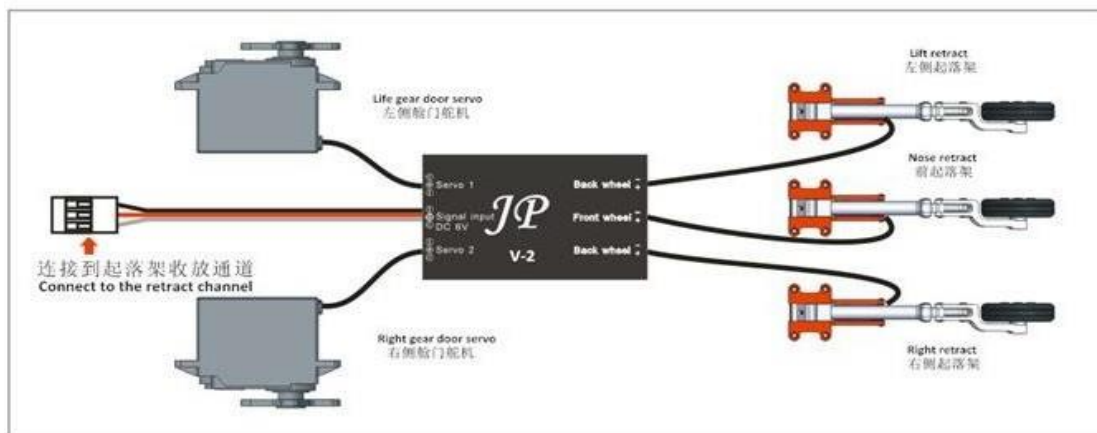
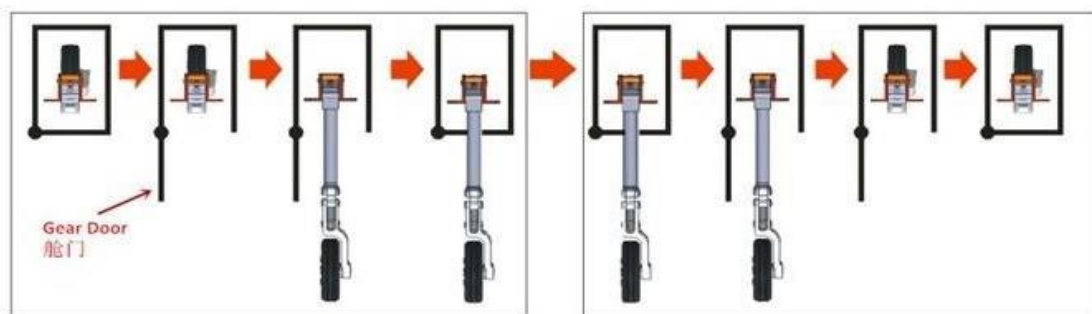
1. Automatic identification current
2. Set the voltage of the door servo
3. Set the CW and CCW direction and stroke of the door servo
4. Set the door retraction sequence

Long press the mode button to enter the setting mode:

1. When the A or B light is flashing, press the + / - button to set the servo CW and CCW direction function.
2. When A+B flashes alternately or C+D flashes alternately, press + / - button to set the stroke of the servo.
3. When the C lamp is flashing, it is V1 mode.
4. When the D lamp flashes, it is V2 mode.

A new generation of V2 upgrade version of the retract control system and release doors closed system seamlessly into an organic whole. The difference of retract control system between V2 and V1 is the doors opening and closing. V2 is designed to be multiple activation patterns that is in order to improve the accuracy when it operation. The system will automatically activate the door system after three set of retracts connected on the controller (The system will not able to activate the door system if one of three retract unconnected on the controller. The system automatically identify to

JP-Electric Retract control V2



abandon the use of port mode at that condition, but other retracts are not effect).

B- Electric retract control operating principle :

In the normal service condition,

- ⤴ Turn on the retract switch then the control system will activate the retraction system to open after checking the door fully open by Auto. The doors will close after the retract are open.
- ⤴ Turn off the retract switch then the control system will activate the retraction system to close after checking the doors fully open by Auto. The doors will close again after the retract are close.

Start the Retract channel	Gear door OPEN	Retract DOWN	Gear door CLOSE	Shutted down Retract channel	Gear door OPEN	Retract UP	Gear door CLOSE
---------------------------------	-----------------------	---------------------	------------------------	------------------------------------	-----------------------	-------------------	------------------------

C- Retracts installation, operation and maintenance

Installation:

Installation is simple. The Retracts have a stander clamping and its installation is similar to any standard retract. An advantage of the electric retract is that installations of complex valves and air circuits are unnecessary. The Retracts are supplied with long enough cable which is directly connected to the control unit. If the cable is no long enough, it can be extended with the correct polarity. Is advisable prolong just the necessary length to avoid voltage drops.

If you want to assemble a set of retract and its door alone, you may need to use wire as (1) to let the controller activate the door function (Retract controller design with automatic cut off protection function, so the line as (1) will not lead to a panel failure or burned)



(1)

Operation:

Retracts must be operated always through JP Retract Control units. Never operate the retracts with direct battery or with other brands control units. The best quality of electric retracts. You will notice the advantage of not having to compress air before each flight, and you will forget the leaks.

Retracts Trouble shooting:

Problems	Solutions	
The Retract	Check whether the retract controller signal	The retract controller signal lines connected to

doesn't move	lines connected correctly	the retract channel again
	Check whether the remote control signal is normal	Check the switch channels. Good debugging remote control signal
	Check whether the remote control retract channel release percentage is set to $\pm 100\%$	sure the release percentage is set to $\pm 100\%$
	Check whether the 6V power supply is to run out of electricity	6V battery charged
The gear door doesn't open	Check whether doors servo signal lines connected correctly	Please follow the labeled correctly connected in the controller
	Check whether door servo damage	Change the door servo
	Check whether three units retract are connected to the retract controller	Please connect three units retract to the control system
The gear door run is in wrong direction	Please check the doors servo signal lines connected to the right channel	Change the doors servo signal lines from wrong channel to other one
Three units retract not work in the same direction	Check the retract cable is correct	Reverse running horse cables properly connected to the control

Manufacture: JMB-Jets SARL
 Contact +352621138851
 Web: www.kingtechturbine.lu
 Mail: kingtech.turbine@gmail.com